



AUTISM SOCIETY INLAND EMPIRE ANNUAL REPORT 2019

Submitted by:

Beth Burt, Executive Director
Jan 2020

 **AUTISM SOCIETY**
*Improving the Lives of All Affected by Autism
Inland Empire*

Our History

ASIE has served the community since 1986 when a divorced mom with a newly diagnosed son, Leah Devulder, was desperately searching for help and resources. Autism was considered rare – it was thought to occur in 1 in 10,000 children, computers were not in homes, and medical and educational professionals had no or minimal training about autism. After searching for months, she found what would become the Autism Society of America hosting a conference in Long Beach, and after attending she was determined to start a local chapter. She slowly found 8 other parents and her dog Candy because you had to have at least 10 people in the area to start a chapter. Her tenacity and perseverance paved the way for thousands of families to receive the help they so desperately needed.

Today we know autism is not rare - 1 in 59 children are being diagnosed (CDC 2019), but our mission remains the same - to improve the lives of all affected by autism in the Inland Empire. The organization works to create a world where individuals and families living with autism are able to maximize their quality of life, are treated with the highest level of dignity, and live in a society in which their talents and skills are appreciated and valued. We provide education, training, outreach to the community, support, information & referral, family events, groups and events for teens and adults on the autism spectrum, as well as advocating for the needs of our autism community.

Who We Serve

ASIE serves what is known as the Inland Empire (Riverside and San Bernardino Counties except for the Coachella Valley which has its own chapter) in Southern California. We are the only autism organization which serves all ages of individuals with Autism, all levels, throughout the Inland Empire. We help the over 15,500 individuals with autism, the over 62,000 family members, and over 2,000 professionals living in the IE.

In November 2019, the California Legislative Analyst Office reported in their publication, "Overview of Special Education in California," 1 in 50 children enrolled in California schools have a special education label of autism spectrum disorders. This number would not reflect students on a 504 Plan, homeschooled, in private school, or do not have any services.

Our Vision

ASIE envisions a future where...

Individuals and families living with autism are able to maximize their quality of life, and treated with the highest level of dignity, and live in a society in which their talents and skills are appreciated and valued.

What this means for us is...

All individuals with autism have the highest quality of life.

Our Guiding Principles

- We support an options policy and provide information on all options, so individuals can exercise freedom of choice in their decision-making.
- We provide services without regard to a person’s age, race, religion, sexual orientation, income level or level of need on the autism spectrum.
- We believe in collaboration and partnerships with others to advance the well-being of all living with autism.
- We provide opportunities for individuals living with autism, family members and professions to participate in our governance, on our committees, and as staff members.

IMPACT METRICS

	2019	2018	2017	2016	2015	2014
Education & Outreach	2,885	2074	1068	1200	1077	675
Info & Referral	2,483	935	4023	5372	7500	7500
Family Services	6,559	5634	5981 @ 154 events	5300 @ 189	3924 @ 123	4500 @ 64
Social Media	14,662	11,432	9,666	3,199	2574	1800
Volunteers	214 @ 3,222 hrs	150 @ 4068 hrs	166 @ 5031 hrs	100 @ 4025 hrs	30 for 5349 hrs	21 vol
Income	\$244,299	\$144,617	\$146,585	\$127,876	\$69,571	\$107,618
Expenses	\$223,080	\$163,440	\$139,623	\$125,880	\$93,252	\$99,940
Net	\$21,219	-\$18,823	\$6,961	\$1995	-\$23,681	\$7,678
% Spent on Programs	90%	90%	80%	77%	78%	79%

65%

OF 2019 PROGRAM RESPONDENTS REPORTED USING OUR PROGRAMS OR SERVICES HAD A POSITIVE IMPACT ON THEIR LIFE

146 survey respondents Oct 2019

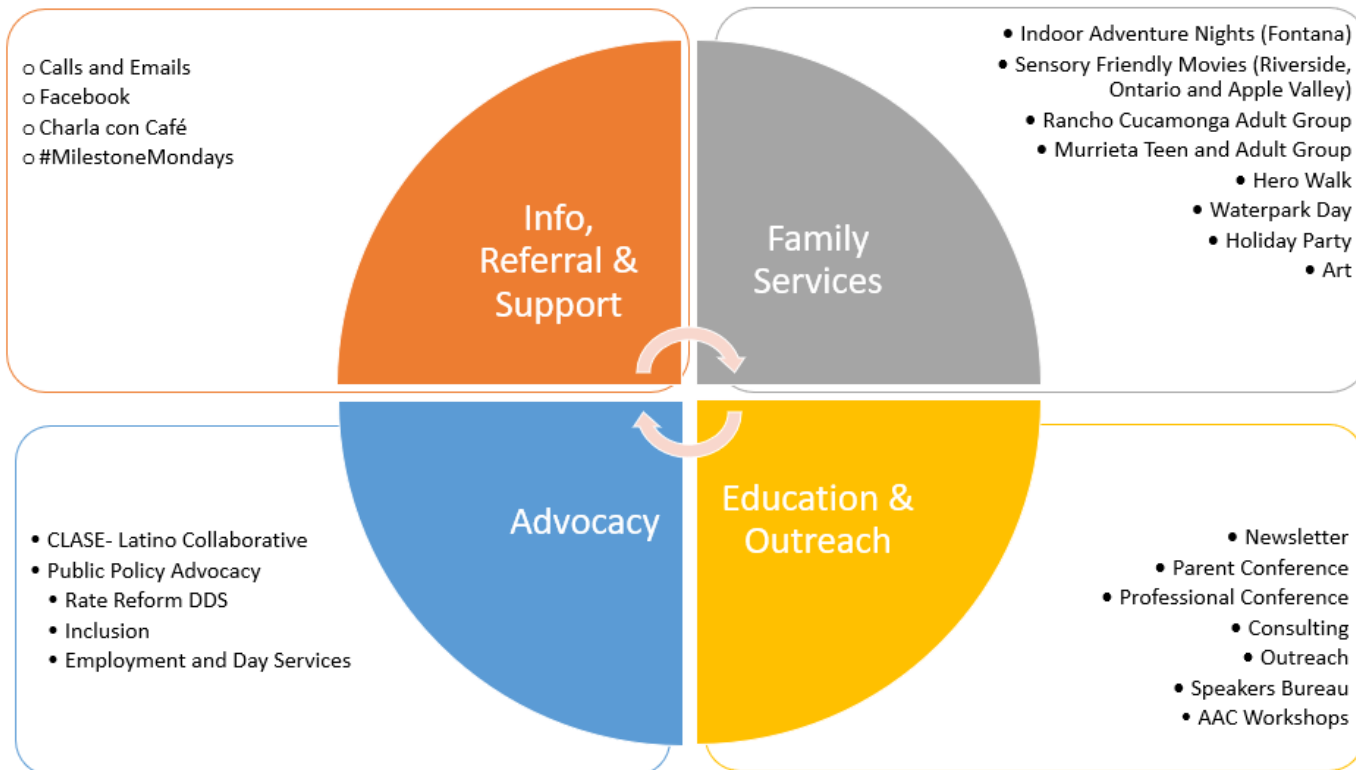


“It has help me by informing me about the various information conferences and speaking engagements that cover ASD and other disabilities.”

“Love taking my family around other families with children of disabilities and not feel different.”

“When I started this journey I felt so alone and when I found this organization I found support in other parents. I gain back my strengths to keep going and be a productive parent for my child.”

2019 Autism Support Services – Supporting You Through Life’s Journey



Autism Society Inland Empire 2020 Programs and Services

1. Resource Support
2. Resource Website
3. Professional Conference in Spring
4. Parent Conference in Fall
5. Life After High School
6. Growing Up with Autism
7. Disaster & Safety Initiative
8. Employment Initiative
9. Art Initiative
10. Marketplace
11. Training and Consultations
12. Outreach
13. Sensory Friendly Films – Apple Valley
14. Sensory Friendly Films – Ontario
15. Sensory Friendly Films – Riverside
16. PLAY Together Night – Chino
17. Indoor Play Night – Fontana
18. Murrieta Teen/Adult Group
19. Rancho Cucamonga Adult Group
20. Charla con Cafe
21. Latino Community of Practice
22. Waterpark Day
23. Holiday Party
24. Hero Walk and Resource Fair
25. Facebook group
26. Public Policy/grassroots advocacy

Public Policy Focus 2019

- **Employment and Day Services:**
 - Lillian and Beth continue to work with Inroads on launching IMPACT ARTS, an innovative day program which will provide quality training on art skills and give adults an opportunity to learn the business side. Scheduled to open by Feb 2020.
 - Lillian and Beth started discussing HOPE CATERING. Another innovative program in which ASIE would run to provide job training and practice for adults interested in the culinary field.
 - Stephani continues to serve on the San Bernardino County Workforce Development Board Sub-Population Committee
 - Beth continues to participate in several collaboratives and works with parents on barriers to employment in the Inland Empire.
- **Inclusion in the Community:** As a joint effort with collaborators from the Inland Empire Autism and NDD Committee, we work on developing educational material for parents and professionals to assist parents in participating in the community fully.
- **Safety and Disaster Preparedness in the I/DD Community:** This has been a focus of ASIE for the last four years, however the shooting of Kenneth French at Costco brought a new awareness to the community for greater collaboration and need to educate individuals with autism, family members and caretakers.
- **Need for person-centered, outcome-based services:**
 - Beth testified at a Senate Sub-committee hearing on the need to restore social recreation and camping services which according to surveys is the number one need of local and families throughout the state.
 - Beth and JJ applied for and were accepted onto California Department of Developmental Service workgroups to give input on Regional Center reform.

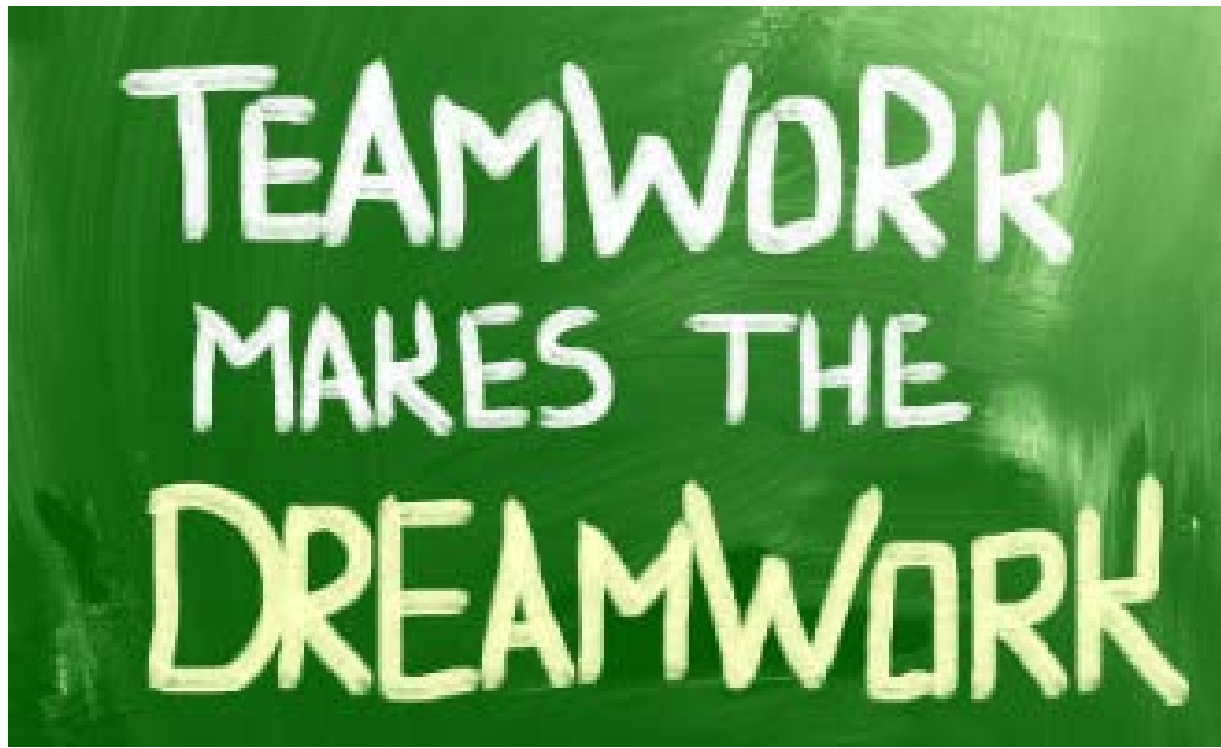
Strengthening Infrastructure

ASIE made great strides in 2019 in strengthening internal systems and procedures. Some of the highlights include:

- Continued with Board transition to a governing/fundraising board
- Piloted two quality conferences – one for professionals and one for parents to secure a stable funding stream around an expertise we possess. Became vendored in Sept 2019 to accept payments from Regional Center families.
- Received our first government contract to provide training to the Inland Empire Latino leaders (CLASE Latino Community of Practice) at \$77k.
- Shifted focus to monthly giving (went from 2 donors \$60 to 11 at \$150 a month)
- Applied for a record \$331 in grant funding around 4 funders
- Contracted with an answering service to help track calls and determine trends. Increased Resource Specialist from 2 to 3: calls under 17 yrs & events; calls over 18 yrs; and email.

Areas of Focus in 2020:

- Implement new Communication and Marketing Plan
 - Better oversight on Social Media – paid position
 - Better engagement on Social Media – volunteer position
 - Focus on engagement and community building
 - improve Telling our Story skills
- Implementing a new Talent Management process
 - Paid Volunteer Coordinator -
 - Implementing Volunteer Recognition and regular communication
- Continue to work on two major conferences
- Grant project implementation
- Continue to explore possible fundraising streams



Autism Society Inland Empire Staff

As of Jan 1, 2020 and in according to new California state law, the Autism Society Inland Empire currently has a total of 6 part-time staff:

Beth Burt – Executive Director
Clara Garcia – Director of Programs (bilingual)
Anel Ibarra – Program Coordinator (bilingual)
Liliana Alvarado – Resource Specialist (bilingual)
Melissa Cardona – Resource Specialist (bilingual)
Michele Villa – Resource Specialist

Key Volunteers:

Group facilitators

Kathryn Ross – Rancho Cucamonga Adult Group

Liz Estes – Murrieta Teen and Adult

Michelle Goodrow – Adventure Night

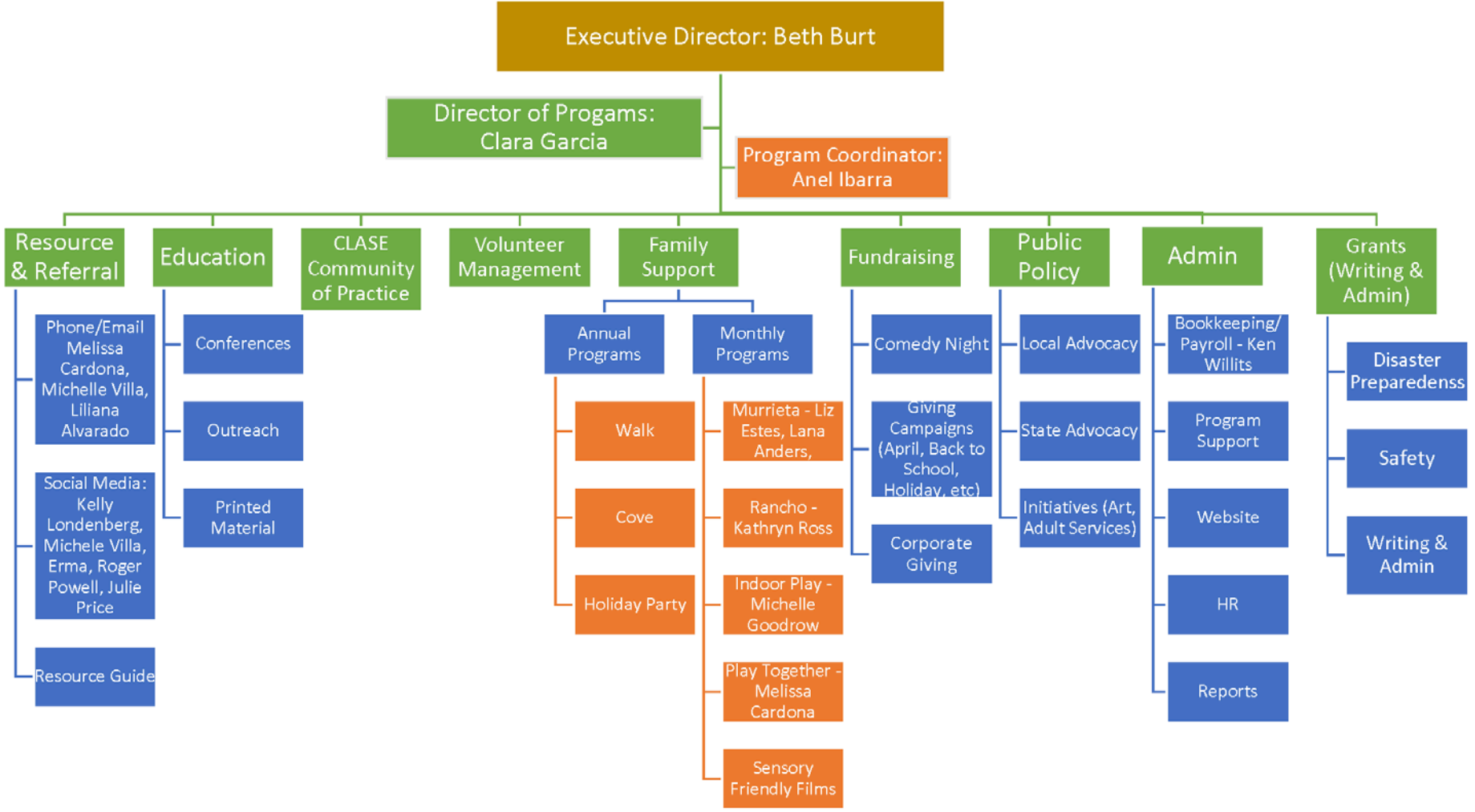
Melissa Cardona – PLAY Together Family Fun Night

Liliana Alvarado – Charla con Café

Roger Powell – Instagram and Social Media

Luisa Domenak, Libby Finley, Suraya Crump, Mariah Villalobos - Outreach and large events

Autism Society Inland Empire Board



Community Partners

Thank you to the over 214 volunteers who volunteered over 3,222 hours and the following community partners for making an impact on our local autism community:

1. Abundant Living Church
2. Aidan's Army Foundation
3. Autism Assessment Center
4. Autism Behavior Services
5. Cal Baptist University, Speech and Language Students
6. California Department of Developmental Services
7. CDCAN (California Disability Advocacy Network)
8. City of Murrieta
9. Department of Rehabilitation
10. Easter Seals
11. Inland Empire Autism & NDD Collaborative
12. Inland Empire Community Collaborative (IECC)
13. Inland Empire Disability Collaborative (IEDC)
14. Inland Regional Center
15. Inland Regional Center CAC
16. Molina Healthcare
17. Murrieta Unified School District
18. Murrieta USD CAC
19. State Council on Developmental Disabilities

