

IMPACT REPORT



Our Mission

We create connections, empowering everyone in our local Autism community with the resources needed to live fully.

TABLE OF CONTENTS



.....		
Message from the Director	02	Connecting Families to Care and Community Support Groups	13
.....		
The Urgent Need and Our Response	03	
.....		2025 Autism Acceptance Walk	14
Our 2025 Impact	04	
.....		Grassroots Advocacy	16
How We Serve the Local Autism Community	05	
.....		Safety Initiatives	17
Trusted Messenger & Growth	06	
.....		Employment	21
Connecting People To The Resources They Need	08	
.....		Our 2026 Initiatives	22
Connecting Families to Fun & Friendship: Recreation Programs	10	• Complex Care	
.....		• Equity and Inclusion	
Connecting Families to Expert Insights and Practical Tools: Education and Outreach	12	• Hope For The Holidays	
.....		
		Fiscal Reporting & Partners	27
		



Message From Our Director

As we enter 2026, I remain deeply grateful for our community, our champions, our donors, and partners. Without you, none of our progress to build a more inclusive, supportive future for everyone touched by Autism would be possible. Your support has fueled new programs, expanded services, and brought hope to families across the Inland Empire.

Every day, thousands of families in the Inland Empire face major obstacles. Each statistic represents a family with a unique story:

- **The Newly Diagnosed Family:** A parent hears, “Your child has Autism.” Uncertain about next steps, they may feel lost. We offer immediate guidance, resources, and hope.
- **The Newly Diagnosed Adult:** After years of uncertainty, an adult receives an Autism diagnosis. Relief may be mixed with confusion and isolation. We provide resources, peer support, and community connections to help them understand their diagnosis and build a meaningful life.
- **The Family on a Long Waiting List:** Families may wait months or even years for assessment or therapy, often feeling helpless. We bridge this gap with support groups, education, and social opportunities so no one feels alone.
- **Families Who Feel Isolated:** Parents may feel judged or anxious about how others perceive their child, leading to overwhelming isolation. Many withdraw from community events or public spaces. We foster safe, welcoming environments through support groups, inclusive activities, and education so families feel understood and connected.
- **The Family in Crisis:** When a child faces severe behavioral or medical challenges, families can feel exhausted and afraid. We connect them to emergency resources, train first responders, and advocate for compassionate systems.

As a parent with an adult with Autism, I know our mission is urgent because these families cannot wait. They need connection, answers, and support now.

On behalf of our board and our staff, thank you for standing with us to ensure every family has hope and every individual has a future filled with possibilities.



Beth Burt
Executive Director



The Urgent Need and Our Response

With Autism now affecting 1 in 19 children in California, over 30,000 individuals with Autism and 90,000 family members live in Riverside and San Bernardino Counties. The Autism Society Inland Empire provides crucial services to meet the unique needs of individuals and their families.

4x

Autistic people are up to four times more likely to experience loneliness than non-autistic people.

89%

Unemployment rate for Inland Regional Center clients as of 2023.

DDS Employment Dashboard

7x

Individuals with Autism are seven times more likely to interact with law enforcement.

Lartey, 2024

6,000+

Teens and adults with Inland Regional Center have challenging behaviors and few resources.

49%

Of children with Autism attempt to wander or elope from a safe environment, almost four times higher than their unaffected siblings. Drowning is one of the leading causes of death for individuals with Autism. Children with Autism are 160 times more likely to die from drowning compared to the general pediatric population.

Our 2025 Impact

Answered over
9,500
calls & emails

1,926
attendees at
40 educational
events

9,597
attendees at
184 events

447
participants in
support groups

Connected with
8,648
individuals through
7 outreach events

Created
84
job skills
opportunities

Our Continued Growth



28%
Increase in
revenue over
last year (LY)

19%
increase in reach
across social
media platforms
over LY

62%
increase in
answered calls and
emails over LY

36%
increase over LY in
our website
sessions to 133k
annually



Highlights

- Launched the Blue Envelope Safety Program with Inland Regional Center and San Bernardino County Sheriff's Office with over 20,000 Blue Envelopes/kits distributed; 39 Law Enforcement Agencies and stations participating. Fire Departments: 3 engaged, with launches planned for next year.
- Co-sponsored the first "Bridging the Gap Summit" for Law Enforcement agencies. 62 participants from 21 law enforcement agencies.
- Provided over 1900 sensory kits to first responders.
- Provided training to over 100 first responders.

How We Serve the Local Autism Community

38,585
People Served
in 2025

Education & Outreach

Workshops,
Webinars, Our Walk
and outreach events

Advocacy

Ensuring
policymakers hear
the concerns of our
local community

Programs & Events

Virtual & in-person
programs geared to
children, teen, and
adults; fun family
events

Person centered services,
connecting &
empowering individuals
& families in our local
Autism community to live
more fully.

Special Initiatives

Employment, Law
Enforcement,
Safety, & Leadership
Classes

Resources & Referrals

Assisting in
navigating systems
in English and
Spanish

Support

Support groups for
children, teen,
adults and family
members



Our Impact in 2025

Trusted Messenger: Building Confidence and Connection



Since 1986, the Autism Society Inland Empire has proudly served as our community's trusted messenger and thought leader. Families, professionals, and partners rely on us for accurate information, compassionate guidance, and advocacy that reflects the lived experiences of the Autism community.

Our reputation as a trusted messenger is built on decades of service and strong partnerships. Collaborations with organizations such as the San Bernardino County Sheriff's Department, Inland Regional Center, and the Department of Developmental Services amplify our impact and ensure families receive the support they need.

We lead with inclusivity and personalized support, fostering deep trust within the community. Through culturally responsive outreach and programs such as CLASE, Blue Envelope Safety Initiative, and the development of our Complex Care Clinic, we proactively address the unique needs of individuals with Autism and their families.

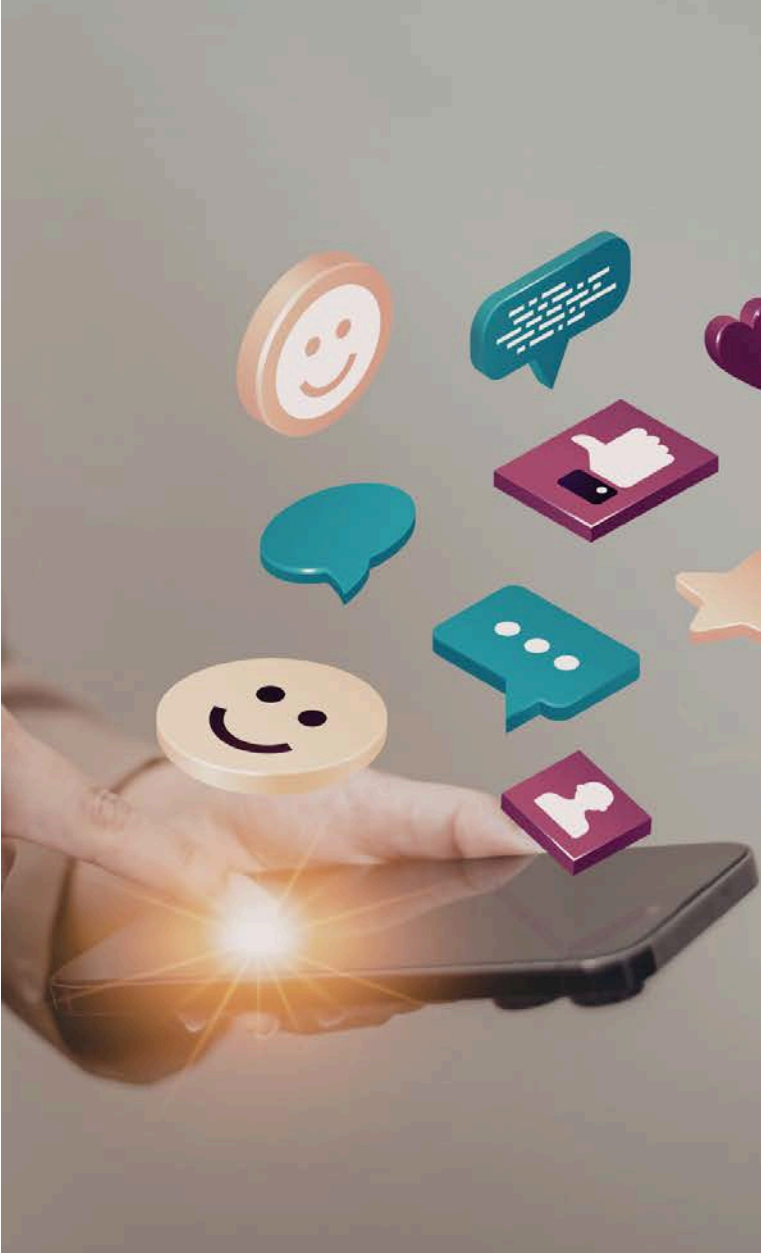
Our Impact in 2025

Our Growing Reach

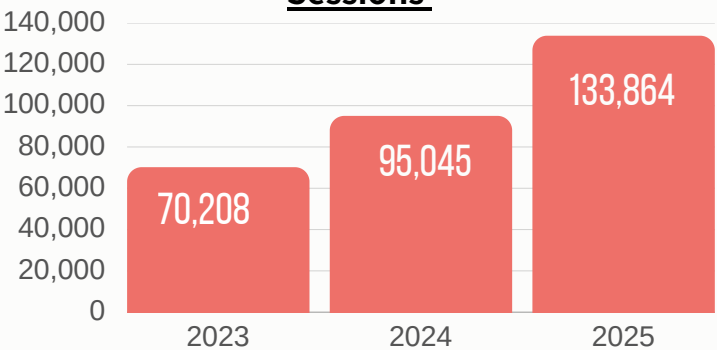
43,659
followers

across Facebook, Instagram,
LinkedIn, and email

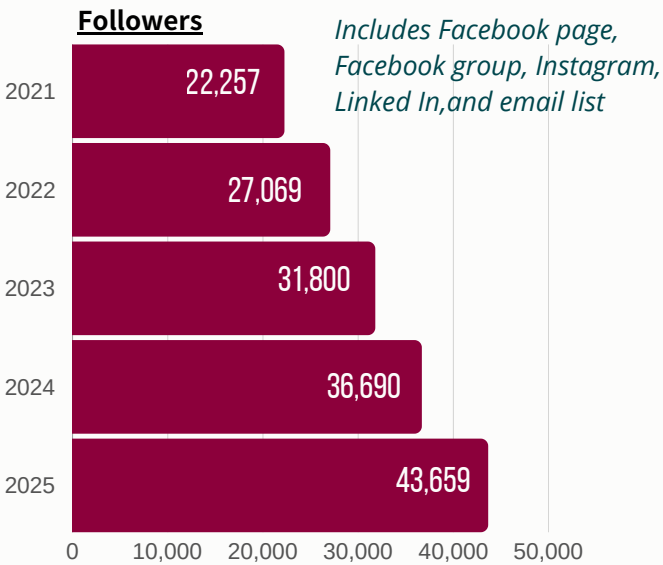
In 2025, our followers grew to 43,659 individuals across Facebook, Instagram, LinkedIn, YouTube and email—a 19% increase from 36,690 in 2024. This growth demonstrates our ability to connect with diverse audiences and deliver timely, relevant resources that empower families and professionals.



Website Sessions



Social Media Community



Our Impact in 2025

Connecting People To The Resources They Need



Systems Navigation Services

In 2025:

133,020

sessions on our
website
and

9,508

calls and emails

The Autism Society Inland Empire is committed to meeting families where they are by embracing the way information is consumed today. In 2025, we began shifting to a digital-first approach, offering mobile-friendly resources and increasing our video, interactive guides, and short-form content to make complex topics easier to understand. Our outreach includes culturally relevant materials in multiple languages and active engagement on social media to ensure accessibility for all communities. By combining trusted, evidence-based content with real-life stories and peer support, we're creating a more connected, informed, and empowered network for individuals with Autism and their families.

“Autism Society has been a gem for my son! The social gatherings has allowed my family to connect with family alike. The information and resources provided by specialist has also been very useful.”



Our Impact in 2025

Connecting Families to Fun and Friendship: Recreation Programs



“Autism Society events have given my son more opportunity to be himself & confident in his own skin & has helped him more in public as well as myself it's brought comfort to me that we are not alone we really enjoy them it makes us feel at home❤️”

Our Impact in 2025

Where Play Meets Connection!

2025:

We served 9,597 individuals at 184 events.

Recreation programs are a lifeline for parents and individuals with Autism who often feel isolated and overwhelmed. These inclusive activities reduce stress, build confidence, and foster friendships, improving mental health for the entire family.

When families laugh together at a jump night or connect at a sensory-friendly event, they find hope and a sense of belonging. Our recreation programs create safe spaces where parents can relax without fear of judgment, and individuals can just be themselves.

These events help families reduce stress, less lonely, and feel more connected. When a child smiles at a sensory-friendly movie or a parent laughs with others who truly understand, it's more than a good day—it's a boost to their mental well-being.

Including Holiday events, Bowling, Movies, Pool Party, Jump Nights, Art classes, Meet-ups for children, teens and adults, and more!



Our Impact in 2025

Connecting Families to Expert Insights and Practical Tools: Education and Outreach

In 2025, we provided critical information to 2,058 individuals through educational events, including webinars, in-person conferences, and workshops. These sessions featured expert speakers, interactive learning, and the latest research and strategies in Autism care and education. Every education presentation included closed captioning and Spanish interpretation, with ASL available upon request—ensuring accessibility for all.

Outreach is vital to raising awareness and providing access to essential resources. In 2025, we connected with 8,648 individuals through 37 outreach events. These events allow families to discover programs, meet service providers, and build relationships that foster inclusion and support.

Our presence at community events ensures that families receive trusted information and immediate access to resources. Each interaction strengthens our network and builds a more inclusive community for individuals with Autism and their families.

Education

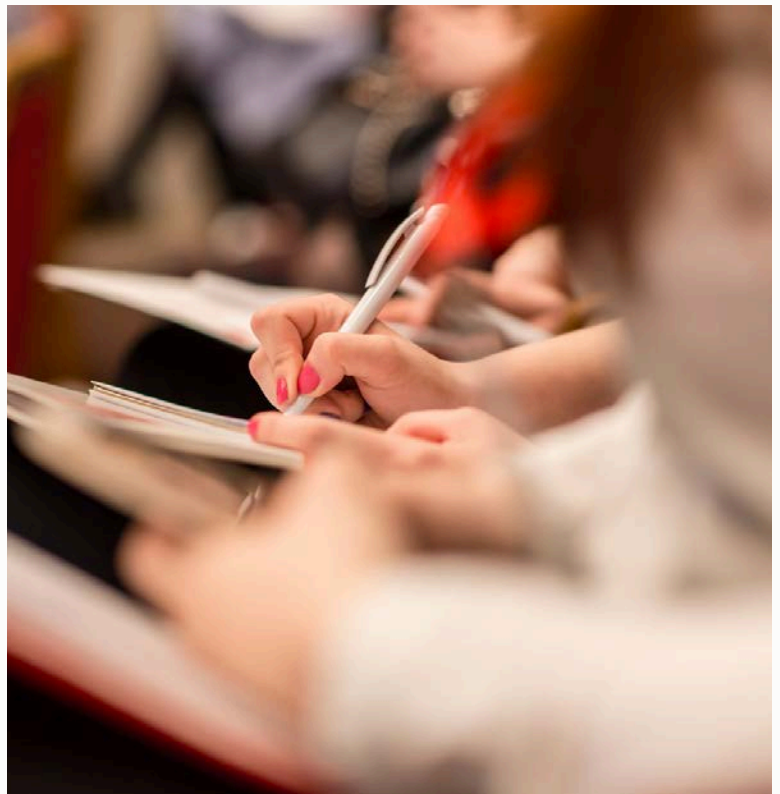
We served

2,058
individuals

Outreach

We served

8,648
individuals



In 2025:

447
individuals
attended our
support groups

7,100
members
find community
in our Facebook
Support group

Connecting Families to Care and Community Support Groups

Living with Autism—whether as an individual or a family member—can feel overwhelming without a strong support system. That’s why we create spaces where people feel heard, understood, and connected.

In 2025, 447 individuals found community through our formal support groups. These groups offer emotional support, practical advice, and friendships that last a lifetime. Each group is designed with the unique needs of our community in mind:

- **Autistics Diagnosed as Adults** – A virtual monthly group led by a neurodivergent therapist, offering understanding and strategies for adults navigating a late diagnosis.
- **Olive Tree Coffee Talk** – An in-person monthly group in Coachella Valley for parents of children with developmental disabilities, creating a safe space to share and learn.
- **Talk to Me Tuesday** – A twice-a-month virtual group for teens and adults with Autism, their families, and professionals, facilitated by a neurodivergent leader who understands their journey.

Beyond these formal groups, our private Facebook support group connected 7,100 individuals in 2025. This online community is available 24/7, giving people a place to ask questions, share experiences, and find encouragement whenever they need it.





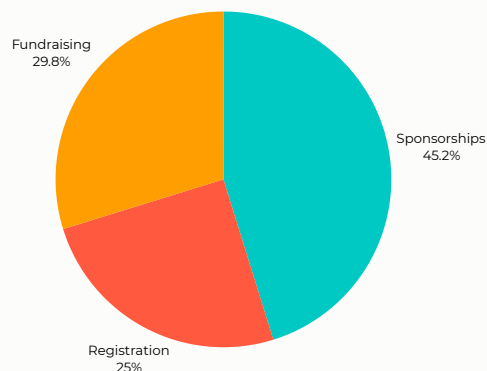
Our Impact in 2025

2025 Autism Acceptance Walk: Celebrating Diversity and Strength in Every Step



Our Impact in 2025

2025 Autism Acceptance Walk: Celebrating Diversity and Strength in Every Step



2025 - \$125k
2600 participants

When Community Shows Up—Rain or Shine: 2,600 Strong!

On April 26, 2025, more than **2,600 participants** braved the rain to take part in **the largest Autism Walk in Southern California**, held at the **historic Perris Railway Museum**. Despite the weather, families, friends, and supporters filled the grounds with color, joy, and unwavering community spirit—turning a stormy morning into a powerful Celebration of Inclusion.

Attendees explored a lively **Marketplace and FunZone**, visited with **over 60 vendors**, and connected with vital resources at our **Safety Fair**. The unique setting of the Railway Museum added to the magic of the day, offering **train rides**, **historic exhibits**, and incredible **movie cars** that delighted participants of all ages. **Food trucks** kept everyone fed and smiling as the walk route wound through the museum's iconic locomotives and railcars.

We closed the day by **honoring our dedicated fundraisers and VIPs**, whose commitment strengthens our mission and uplifts families across the Inland Empire.

Even in the rain, one thing was clear:

When community shows up—rain or shine—we are unstoppable.



AB 308 (Ramos) Enhancing Crisis Response for Individuals with Autism

For the first time, the Autism Society Inland Empire is proudly co-sponsoring legislation—Assembly Bill 308, introduced by Assemblymember James C. Ramos in January 2025—that empowers county behavioral health directors to create specialized procedures and training for mobile crisis response teams. These protocols are tailored to emergencies involving individuals with Autism, developmental disabilities, and behavioral health conditions, ensuring compassionate, informed care during high-stress situations.

Grassroots Advocacy

Driving Change from the Ground Up

Advocacy is more than policy—it's about people. It raises awareness, breaks down stigma, and builds a community where every voice matters. By shaping laws and driving systemic change, we ensure the Autism community's needs are met with dignity and inclusion.

In 2025, we mobilized families and self-advocates to speak up and share their lived experiences with local, state, and federal leaders. We didn't just encourage action—we stood alongside them. Our team served on key task forces and advisory councils, collaborating with agencies to improve care systems and influence decisions that impact thousands of lives.

State Task Forces and Councils We Participate In:

- DDS Latino Focus Group
- DDS Master Plan
- DDS Employment Task Force
- SB882 Advisory Council on Improving Interactions between People with Intellectual and Developmental Disabilities, Mental Health, and Law Enforcement

These seats at the table matter—they allow us to shape policies and programs that create lasting, meaningful change for individuals with Autism and their families.

Through these efforts, we are building more than programs—we are building a movement that empowers families, strengthens systems, and drives sustainable change.

Safety Training: Protecting Lives Through Education

In 2025, we deepened our promise to protect every life by creating safety programs that do more than teach—they build trust, compassion, and hope. Together, we worked to make emergencies less frightening and communities members feel more connected. Here's what we accomplished:

- **Hospital Training:** 71 medical professionals learned how to provide care that is not only informed but deeply compassionate—because every patient deserves dignity and understanding.
- **Fire & EMS Training:** 46 first responders gained tools to approach emergencies with empathy and confidence, ensuring safer, calmer interactions for individuals with Autism and their families.
- **Fire Safety Education:** We partnered with Inland Regional Center and San Bernardino County Fire to help families prevent tragedies and respond with confidence when seconds matter.
- **Inclusive Safety Programs:** Piloted a Deaf and Hard of Hearing (DHH) component in first-responder training, breaking barriers to ensure safety is accessible for everyone.
- **Safety Fairs:** Hosted two vibrant fairs—one at our Autism Acceptance Walk in Perris and the other at our Spooktacular event in La Quinta—where families and first responders came together, face-to-face, to share stories, gather resources, ask questions, and build trust.
- **Family Resources:** Introduced the ER Health Passport, now embraced by Fire Departments as a quick-reference guide to ensure individuals with Autism receive the care they need during emergencies.

These efforts aren't just about protocols—they're about people. They're about a firefighter kneeling to reassure a child, a doctor who understands without words, and a family who feels safe because someone cared enough to learn.

Blue Envelope Program



Every envelope or kit distributed represents a family who feels safer—and a community that is more inclusive.

- Over 20,000 Blue Envelopes/kits distributed
- 39 Participating Law Enforcement Agencies and stations
- Fire Departments: 3 engaged with launches planned for next year

Our Impact in 2025

Bridging the Gap Summit

On July 31, 2025, we co-hosted the first-ever Bridging the Gap: Law Enforcement and the Autism/IDD Community Summit in San Bernardino.

Co-sponsored by Inland Regional Center, the Autism Society Inland Empire, and the San Bernardino County Sheriff's Department—with funding from DDS—the event united 62 participants from 21 law enforcement agencies and members of the I/DD and Deaf and Hard of Hearing communities to build understanding and create safer, more inclusive interactions.



Bridging the Gap Summit

2025 LAW ENFORCEMENT AND THE
AUTISM/IDD COMMUNITY



Our Impact in 2025

Sensory Kits

In 2025, we distributed a record of more than 1,900 sensory kits to hospitals, doctors offices, medical response, fire and law enforcement.

These kits provide calming tools and practical resources to help individuals with Autism manage stress during emergencies or overwhelming situations. Each kit is a lifeline—reducing anxiety, improving communication, and creating safer, more supportive environments.

From a paramedic:

“I just returned from Loma Linda University Medical Center where I was helping crews offload when I crossed paths with another team heading to LLUMC Children’s. They were transporting an autistic pediatric patient who was non-verbal. The moment they realized she was becoming overwhelmed, they reached for the sensory kit—and it completely transformed her experience.

Her mother, who was by her side, was visibly relieved and deeply grateful. She wanted the crew to know how much their quick thinking and compassion meant during such a frightening moment.

And yes... I was absolutely in tears in the ER.

A heartfelt shoutout to this incredible crew and to everyone at the Autism Society Inland Empire. As I’ve said before—your work truly makes a difference. Not just for the patients we serve, but for their families, our crews, and every person touched by moments like this.

From the bottom of my heart, thank you.”

Employment

With an 89% unemployment rate among the 19,000 Inland Regional Center working-aged clients, the Autism Society Inland Empire is breaking barriers to employment.

Through Future Pathways, our vendorized Remote Employment Program, we provided 42 individuals with 130 hours of training, job exploration, and matching in partnership with Daivergent. The results speak for themselves:

- 36% job placement rate—2.5x higher than the average employment provider
- Confidence doubled: 93% believe they can get a job (up from 48%)
- 80% feel ready to work within six months

We also create real-world opportunities that promote self-employment opportunities for 37 individuals with Autism/IDD through:

- Paid roles through our Speaker's Bureau and focus groups
- Volunteer experiences at major community events
- Entrepreneurship support via free Marketplace booths at our Color the Spectrum Art Festival, Autism Walk and Holiday parties

“This program did wonders for my adult son. I am so thankful for Future Pathways for giving my son the opportunity to learn and use the skills which helped him get a full-time job and a new confidence in himself. Your child deserves this opportunity.”



2026 Look Ahead

Our 2026 Initiatives: Complex Care

1 in 5 teens and adults with Autism—more than 6,600 children, teens, and adults have:

- **Complex medical needs**
- **Limited or no verbal communication**
- **Behaviors such as self-injury and physical aggression**



Launching Complex Care Clinics and Resource Guide in 2026

In 2026, the Autism Society Inland Empire is proud to launch our Complex Care Clinics—an innovative initiative designed to address the medical and behavioral health needs of individuals with Autism and intellectual and developmental disabilities (I/DD) who face complex challenges. Guided by national Autism expert, Dr. Margaret Bauman, this program will train local physicians, medical students, and specialists to deliver compassionate, evidence-based care. This model will provide coordinated care for conditions such as epilepsy, gastrointestinal disorders, sleep disturbances, and co-occurring psychiatric conditions.

To further support families and professionals, we will publish our Complex Care Resource Guide in April 2026, offering practical tools, plain-language information, and best practices for navigating complex medical and behavioral health needs.

By removing barriers to quality healthcare and building local capacity, we are creating a system where individuals with complex needs receive the comprehensive support they need to thrive.

Autism Spectrum Disorder

& Co-occurring Medical & Psychiatric Disorders



DID YOU KNOW?

Medical co-morbidities are significantly more common in individuals with Autism Spectrum Disorder (ASD) than the general population.



25x more likely
Epilepsy



7x more likely
(GI) Issues



3.5x more likely
Diarrhea or Colitis



3.5x more likely
Sleep Disorders



2.1x more likely
Ear Infections



1.8x more likely
Asthma

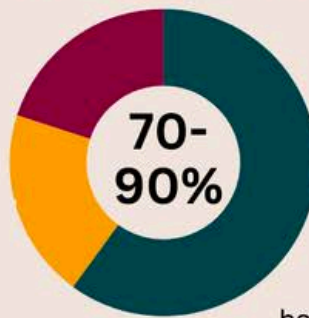


1.8x more likely
Food Allergies



1.6x more likely
Skin Allergies

MENTAL HEALTH CO-OCCURRING DISORDERS



have >1
co-occurring
disorder

41-60% have > 2
co-occurring
disorders

24% have > 3
co-occurring
disorders



ADHD



Anxiety



PTSD



OCD



Depression



Schizophrenia



Bipolar



25%

**Suicidal
Ideation**

1 in 10 will attempt suicide



Our 2026 Initiatives: Advancing Equity & Inclusion



Across multiple systems, families from diverse backgrounds—including people of color and non-English-speaking communities—continue to face barriers to accessing services. We believe equity means ensuring that those most impacted by these challenges have a meaningful voice in shaping solutions.

Individuals bring invaluable perspectives rooted in lived experience. Their involvement isn't just input—it's partnership. Together, we identify core issues and co-create strategies that reflect real needs and foster lasting change.

Our initiatives focus on building platforms where these voices lead, shifting the balance toward fairness, and embedding equity and inclusion in every decision. It's about collaboration, empowerment, and creating systems that work for everyone.

CLASE Community of Practice

The Colaboración, Liderazgo, Abogacía, and Servicio y Educación (CLASE) Community of Practice entered its seventh year in 2025, continuing to serve as a vital network for leaders of groups and nonprofit organizations supporting Hispanic and Spanish-speaking individuals and families with intellectual and developmental disabilities (I/DD) in Riverside and San Bernardino Counties. Funded by the Department of Developmental Services (DDS), CLASE fosters collaboration, leadership development, and advocacy to remove barriers and improve equity. This year, we expanded our impact by releasing a comprehensive Spanish-language Resource Guide to help families navigate services and access critical supports. In addition, we continued addressing issues specific to the Latino community at both the state and local levels—ensuring that policies and practices reflect cultural and linguistic needs. Through CLASE, we are building leadership capacity, strengthening community connections, and ensuring that Spanish-speaking families have the tools and information needed to thrive.



First Nations Outreach

Thanks to generous funding by the Inland Regional Center, the Autism Society Inland Empire is in its fourth year of strengthening relationships with First Nation communities in Riverside and San Bernardino Counties. We focus on culturally responsive outreach, personalized case management, and trauma-sensitive early intervention services that respect and honor each tribe's unique traditions, values, and priorities. With the support of our Native American Liaison, we are building trust and co-creating solutions alongside tribal leaders to remove systemic barriers and ensure Native American families have access to the critical supports needed for their children to flourish.

Our 2026 Initiatives: Hope for the Holidays

This year, our Hope for the Holidays program brought meaningful support and joy to 180 individuals across 85 families in our community. Many of the families we served face significant financial and caregiving challenges, especially during the holiday season. Through the generosity of donors and the dedication of our team, we were able to provide gift cards, essential items, and sensory-friendly gifts tailored to the unique needs of autistic individuals and their families.

Beyond the tangible support, families shared that the program offered relief, dignity, and a sense of connection at a time when it was needed most. Hope for the Holidays continues to embody our commitment to ensuring that every family feels seen, supported, and valued—especially during the most difficult seasons of the year.



Fiscal Year 2025

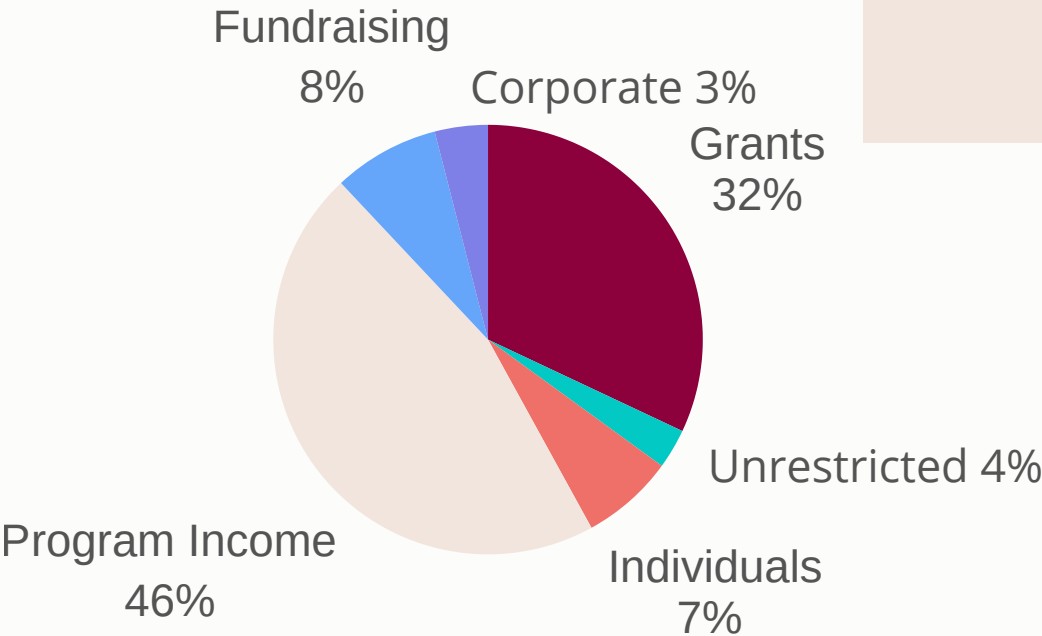
The Autism Society Inland Empire is a 100% self-funded non-profit organization. We rely on grants, sponsors, and donations yearly to support our vital work. We take great pride in being good stewards of the finances entrusted to us, ensuring that every dollar raised stays within our community to benefit local Autism families. Your support directly impacts the lives of those we serve, making a meaningful difference right here at home.

+ 28%
Increase in revenue
in 2025 from 2024.

93%
Of expenses went to
programs.

370
people volunteered over
2,377 hours.

Revenue: \$1,707,978.42



Expenses: \$1,682,591.29



Thank You to Our Partners!

We extend our heartfelt gratitude to our generous donors and dedicated partners whose unwavering support is transforming lives. Your contributions are breaking down barriers to access, creating inclusive opportunities, and ensuring that individuals with Autism and their families receive the resources and support they need.

In 2025 alone, your partnership helped us serve over 30,000 individuals and 90,000 family members across the Inland Empire—providing critical programs, expanding equity, and fostering inclusion. Together, we are building a community where every person can thrive—removing obstacles and driving meaningful change. Thank you for making this impact possible.





Thank you to everyone in our Autism community for your dedication and support; your commitment makes a significant difference in the lives of individuals with Autism and their families.

Autism Society Inland Empire
951.220.6922 | ieautism.org
info@ieautism.org

